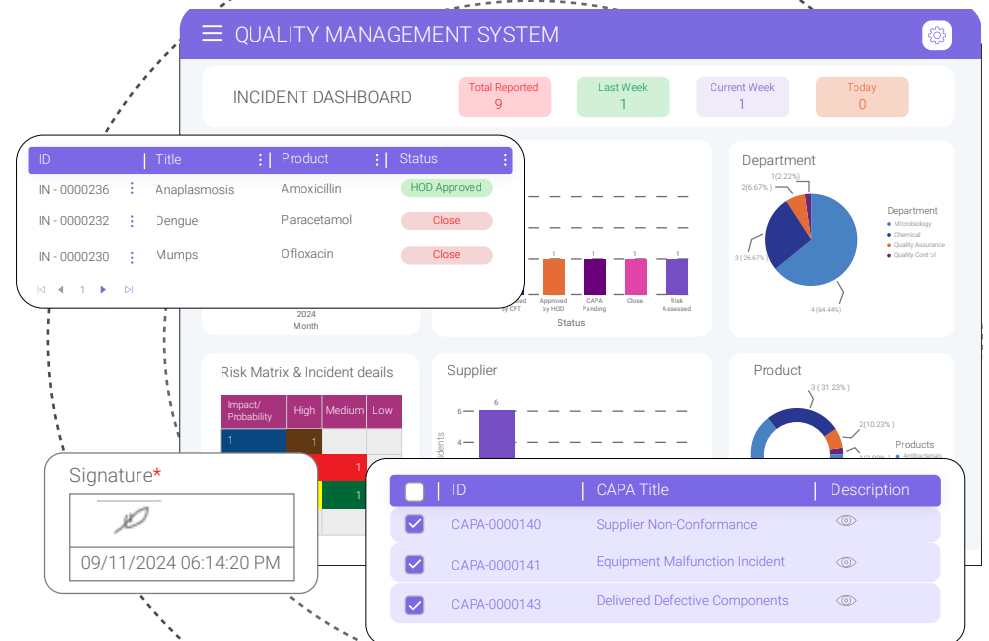


BizPortals QCFlow Risk Management Module

BizPortals QCFlow Risk Management Module provides a structured approach to identifying, evaluating, and controlling risks that may impact product quality, process integrity, or regulatory compliance. It enables organizations to capture risks, perform impact and likelihood assessments using defined criteria, and prioritize them based on severity. It supports the complete risk lifecycle, from risk identification and analysis to mitigation planning, control implementation, and ongoing monitoring, ensuring that risks are continuously evaluated and kept within acceptable limits.

Integrated with other BizPortals QCFlow modules, the system ensures that identified risks are effectively linked to corrective actions, process changes, and audit outcomes, enabling a more controlled and prevention-driven quality environment.



Key Benefits



Centralized Risk Visibility

Consolidate all risks, assessments, and mitigation actions in a single system, improving transparency across teams and functions.



Regulatory Alignment

Ensure risk management practices are documented, standardized, and aligned with regulatory and industry expectations.



Operational Resilience

Strengthen the organization's ability to respond to uncertainties by implementing controlled risk mitigation strategies and continuous monitoring.



Proactive Risk Management

Identify and address potential risks early through a structured approach by monitoring, audits, and inspections, reducing the likelihood of quality issues and operational disruptions.



Improved Quality & Reputation

Prevent defects and quality failures before they reach customers, supporting consistent product quality and strengthening market credibility.



End-to-End Traceability

Maintain complete visibility of risk-related activities from identification to mitigation with documented records supporting audits and compliance.



Improved Decision-Making

Support informed decision-making through structured risk evaluation based on impact, probability, and defined criteria.



Accountability & Ownership

Assign clear responsibility for risk identification, evaluation, and mitigation, ensuring timely action and follow-through.

Key Features



Centralized Risk Repository

Maintain a structured repository of all identified risks, including descriptions, categories, impact levels, likelihood, and associated controls.



Configurable Risk Assessment Templates

Define risk evaluation criteria, scoring models, and thresholds tailored to organizational standards and regulatory requirements.



Risk Identification & Analysis

Capture risks across processes, projects, and operations, with tools to assess severity, probability, and overall risk exposure.



Mitigation Planning & Tracking

Define and monitor risk mitigation actions with assigned ownership, timelines, and progress tracking to ensure effective closure.



Automated Workflows & Approvals

Enable structured workflows for risk review, approval, and escalation, ensuring consistency and governance in risk management processes.



Real-Time Dashboards & Reporting

Gain visibility into risk trends, high-priority risks, and mitigation effectiveness through interactive dashboards and reports.



Audit Trail & Traceability

Maintain complete records of risk-related activities, updates, and decisions to support transparency and audit readiness.



Cross-Module Risk Reporting

Link risks with deviations, audits, CAPA, and process changes to ensure a connected and comprehensive quality management approach.



Role-Based Access Control

Ensure secure access to risk data and functionalities based on user roles and responsibilities.

About BizPortals QCFlow

BizPortals QCFlow is a cloud-based quality management system that centralizes and automates quality processes, enhancing visibility, compliance, and real-time traceability, empowering businesses to reduce risk, boost efficiency, and make confident, data-driven quality decisions. For deeper insights, visit bizportals365.com or [schedule a demo](#) with our team today.

Explore More Modules

Discover how other BizPortals QCFlow modules work together to create a fully connected, enterprise-wide quality management ecosystem. To see how all modules integrate within a unified platform, explore our comprehensive [QMS software](#).